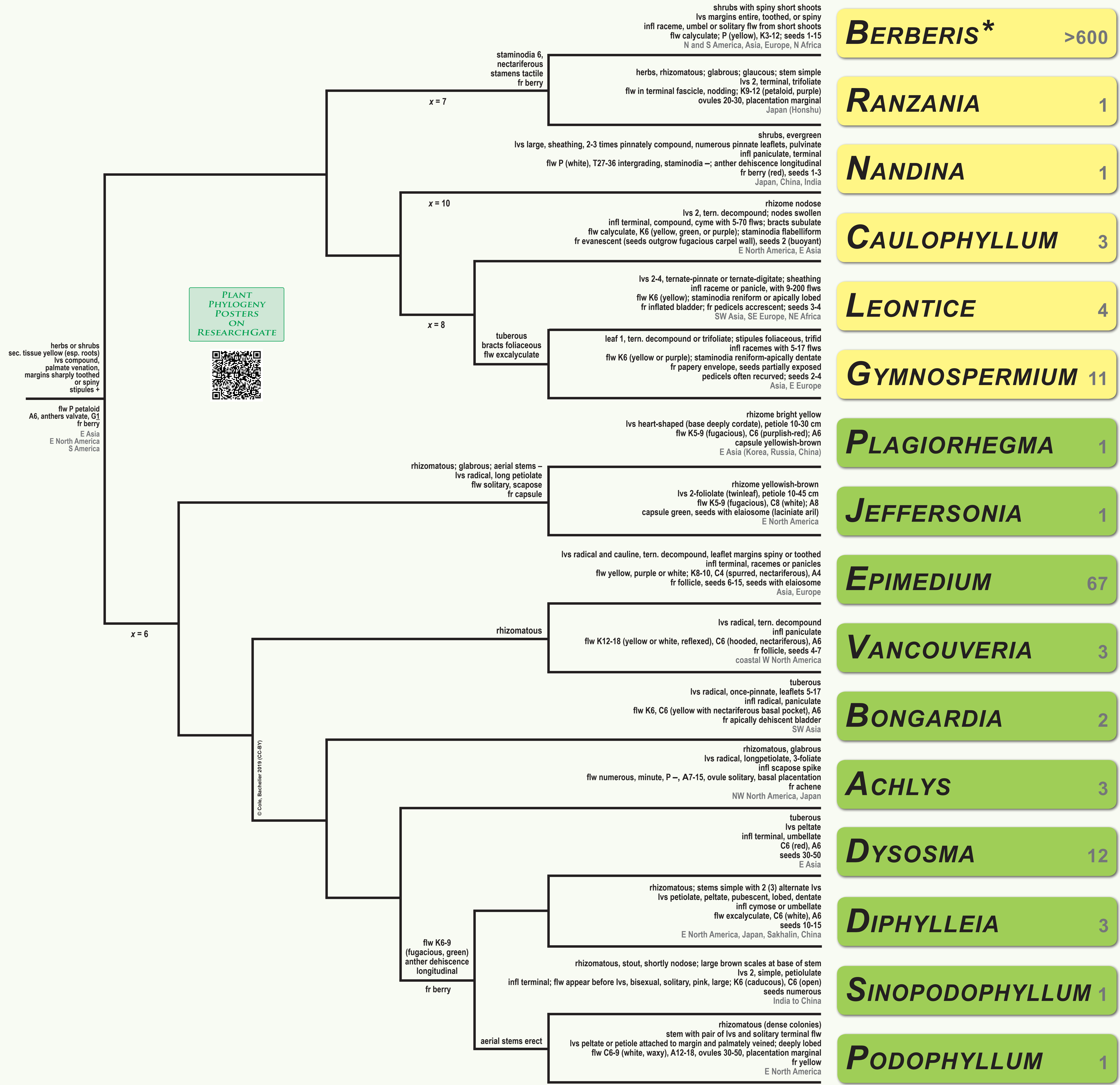


BERBERIDACEAE PHYLOGENY POSTER



BERBERIS*	>600
RANZANIA	1
NANDINA	1
CAULOPHYLLUM	3
LEONTICE	4
GYMNOSPERMIUM	11
PLAGIORHEGMA	1
JEFFERSONIA	1
EPIMEDIUM	67
VANCOUVERIA	3
BONGARDIA	2
ACHLYS	3
DYSOSMA	12
DIPHYLLEIA	3
SINOPODOPHYLLUM	1
PODOPHYLLUM	1

COLE TCH, BACHELIER JB (2019) Berberidaceae Phylogeny Poster

- subfamilies, tribes, and genera with plesio- and apomorphic and (non)diagnostic traits
- hypothetical tree based on molecular phylogenetic data (2019), updated regularly
- ca. 14 genera with ca. 700 species
- phylogeny, classification, and features assembled from the References below
- branch lengths deliberate, not expressing actual time scale
- the listed characters do not necessarily apply to all members of a clade
- features taken a.o. from: APweb and Loconte (1993) in Kubitzki, FGVP, Vol. II

Plagiorhegma subsumed under Jeffersonia by some authors
Sinopodophyllum subsumed under Podophyllum by some authors

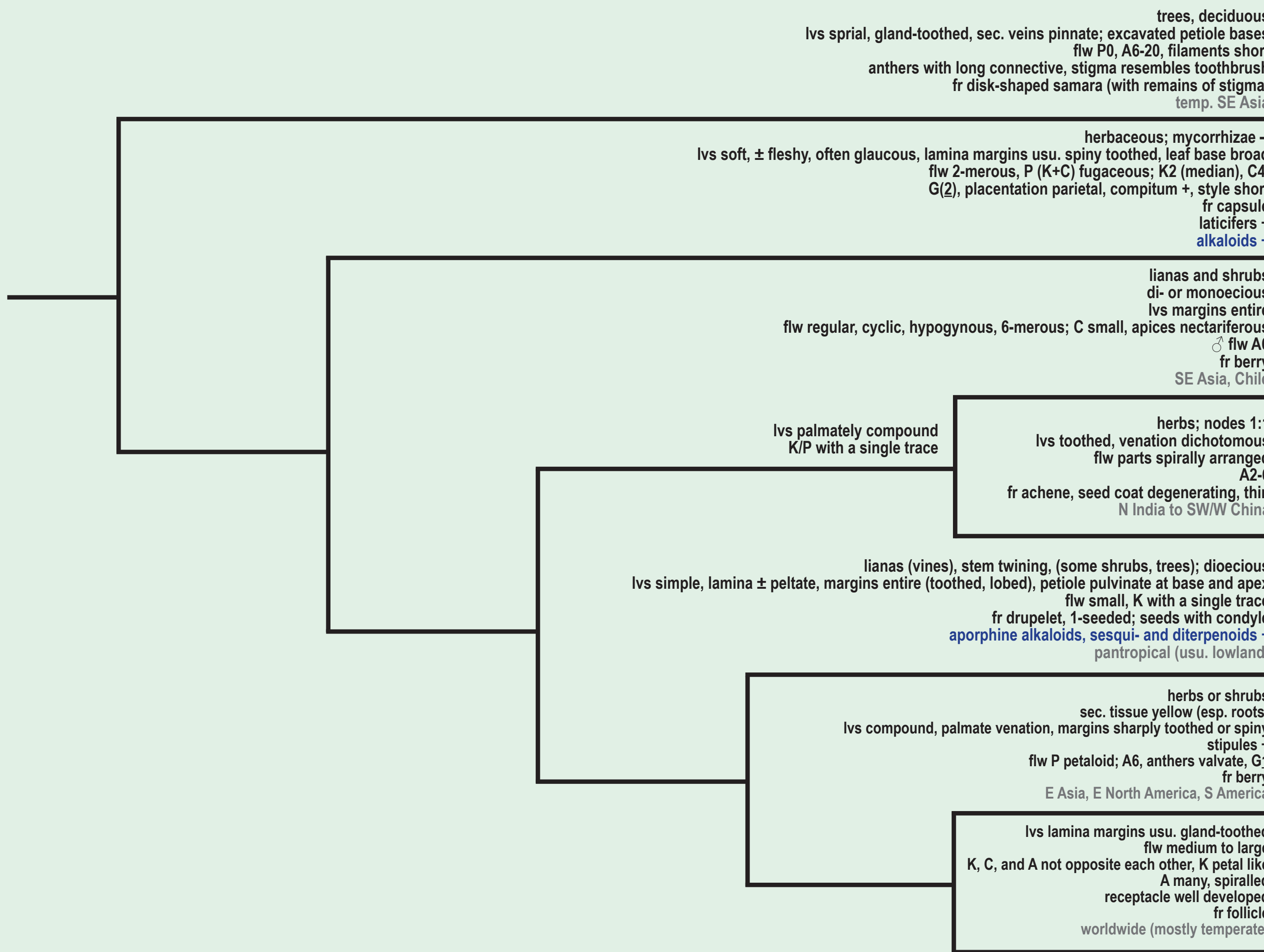
* Berberis sensu lato here; Yu and Chung (2017) propose four genera:
Berberis, Mahonia, Alloberberis, Moranothamnus

References
He P et al. (2019) Mitochondr. DNA Part B 4: 101-102
Loconte H (1993) In Kubitzki, FGVP, Vol. II
Sun Y et al. (2018) Mol. Phylog. Evol. 128: 203-211
Wang W et al. (2007) Syst. Bot. 32: 731-742
Wang W et al. (2009) Persp. Plant Ecol. Evol. Syst. 11: 81-110
Yu CC and Chung KF (2017) Taxon 66: 1371-1392
Zhao L et al. (2016) Botany 94: 359-368

Thanks to Liang Zhao (Northwest A&F University, Yangling, Shaanxi, China) for valuable advice

Freie Universität Berlin

Theodor C. H. Cole, Dipl. Biol.
Julien B. Bachelier, Ph.D., Prof.
Dahlem Centre of Plant Sciences (DCPS)
Institute of Biology
AG Structural and Functional Plant Diversity
Freie Universität Berlin
Altensteinstr. 6
D-14195 Berlin, Germany



EUPTELEACEAE
PAPAVERACEAE
LARDIZABALACEAE
CIRCAEASTERACEAE
MENISPERMACEAE
BERBERIDACEAE
RANUNCULACEAE

RANUNCULALES