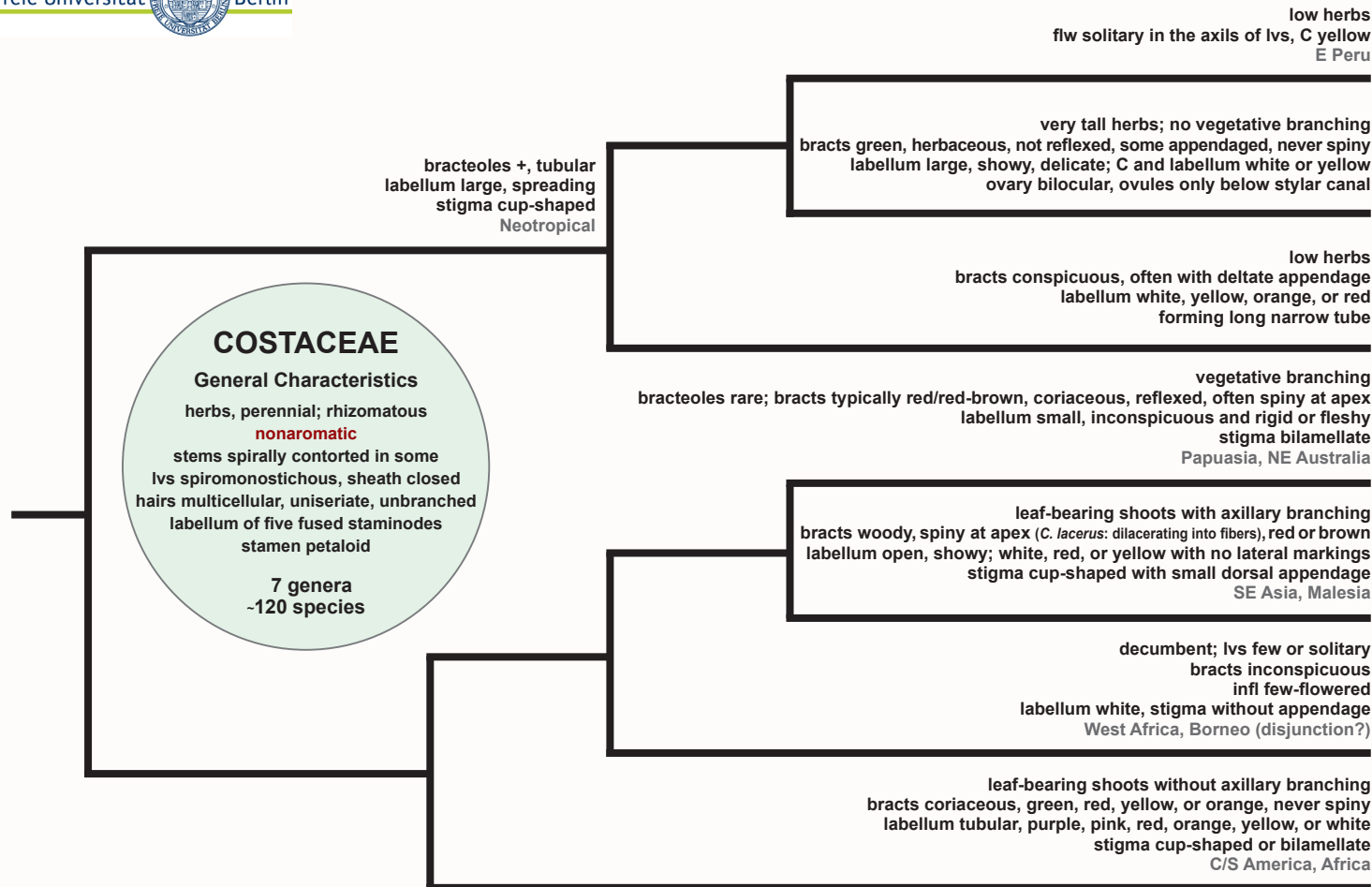


# COSTACEAE

## Infrafamilial Relationships and Characteristics



### COLE TCH (2021) COSTACEAE PHYLOGENY POSTER

THEODOR C. H. COLE, Dipl. Biol., Dahlem Centre of Plant Sciences (DCPS), Institute of Biology–Botany, Freie Universität Berlin, Altensteinstr. 6, D-14195 Berlin, Germany

• tree based on molecular phylogenetic data up to 2016\* • branch lengths deliberate, not expressing actual time scale • family of 7 genera with ca. 120 species • species numbers (in gray) are approximate • *Hellenia* included in *Cheilocostus*

References: Specht CD, Stevenson DW (2006) Taxon 55(1): 153-163; Salzman S et al. (2015) Sys Bot 40(1): 104-115; André T et al. (2016) Mol Phylogenet Evol 103: 55-63; Kubitzki K (ed.) FGVP IV (1998); \* but see also: Carlsen MM et al. (2018) MPE 128: 55-68

Thanks to L'uboš Majeský for valuable discussion