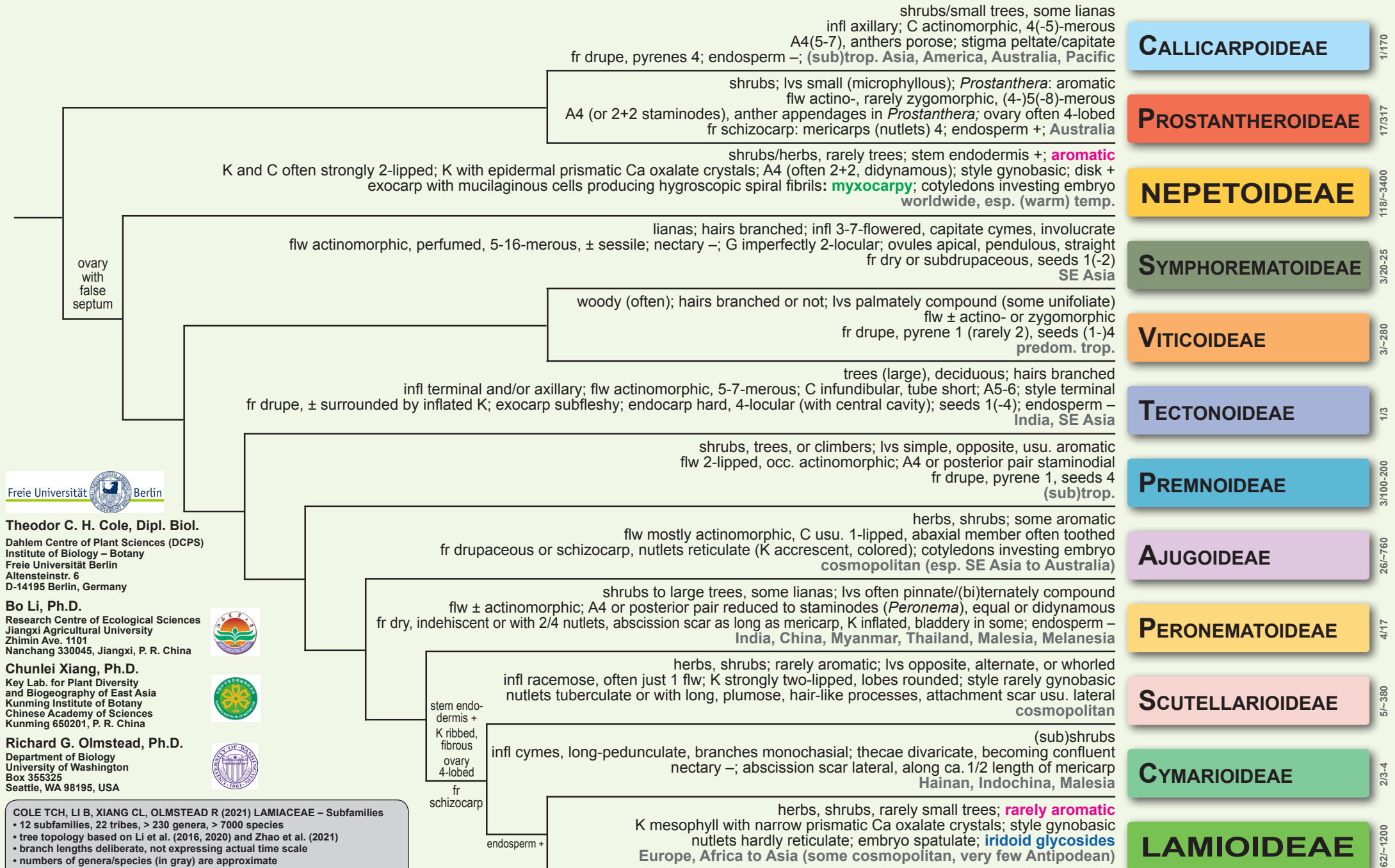


# LAMIACEAE SUBFAMILIES



**Theodor C. H. Cole, Dipl. Biol.**  
Dahlem Centre of Plant Sciences (DCPS)  
Institute of Biology – Botany  
Freie Universität Berlin  
Altensteinstr. 6  
D-14195 Berlin, Germany

**Bo Li, Ph.D.**  
Research Centre of Ecological Sciences  
Jiangxi Agricultural University  
Zhimin Ave. 1101  
Nanchang 330045, Jiangxi, P. R. China



**Chunlei Xiang, Ph.D.**  
Key Lab. for Plant Diversity  
and Biogeography of East Asia  
Kunming Institute of Botany  
Chinese Academy of Sciences  
Kunming 650201, P. R. China



**Richard G. Olmstead, Ph.D.**  
Department of Biology  
University of Washington  
Box 355325  
Seattle, WA 98195, USA



COLE TCH, LI B, XIANG CL, OLMSTEAD R (2021) LAMIACEAE – Subfamilies  
• 12 subfamilies, 22 tribes, > 230 genera, > 7000 species  
• tree topology based on Li et al. (2016, 2020) and Zhao et al. (2021)  
• branch lengths deliberate, not expressing actual time scale  
• numbers of genera/species (in gray) are approximate  
Sources: Kubitzki (2004) FGVP VII, Li et al. (2016, 2020), Stevens (2021) APweb, Zhao et al. (2021)